

2020

TOKYO TRAFFIC SAFETY CAMPAIGN

TUESDAY, DECEMBER 1 to MONDAY, DECEMBER 7

MAKING TOKYO THE WORLD'S NO. 1 CITY
IN TERMS OF TRAFFIC SAFETY



The 8th Tokyo Metropolitan Government Traffic Safety Poster Contest (FY2020) Office for Promotion of Citizen Safety, Director General's Prize-winning entry by Iwakami Seira, a 4th-grader at Sakamoto Elementary School of Chuo-ku

Key points of campaign

- 1 Ensuring Traffic Safety for Children and for Seniors
- 2 Don't Drink and Drive, Preventing Driving Accidents by Seniors and Others
- 3 Preventing Bicycle Accidents
- 4 Preventing Motorcycle Accidents
- 5 Promoting Measures against Illegal Parking

Tokyo Metropolitan Government/Council on Measures for Traffic in the Capital

Key Points of the Tokyo Metropolitan Government's 2020 TOKYO Traffic Safety Campaign

Point 1 Ensuring Traffic Safety for Children and for Seniors

To parents and guardians of children

There are many traffic accidents involving children in Tokyo. In some cases, serious traffic accidents have occurred while using kick skaters and other play equipment on the road, so do not allow these equipment to be used on the road. Adults should be the role model to show children how to follow traffic rules and manners.

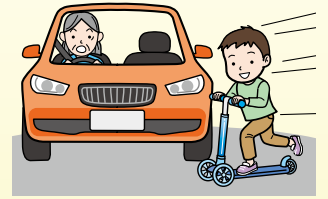
To seniors

Seniors account for about half of all pedestrian fatalities. Even when walking on familiar streets, follow the traffic rules and always make sure that you are safe. And set an examples for others by adopting safe behavior.

To all pedestrians

Practice the safe behavior to protect your own lives such as look right, left and right again, and confirm safety of the road before crossing, even if the traffic light is showing green.

There have been tragic accidents where people have fallen asleep on the road after drinking alcohol and have been hit by cars. If you drink alcohol, stay steady until you get home safely.



Point 2 Don't Drink and Drive, Preventing Driving Accidents by Seniors and Others

To all drivers

Drunk driving is a criminal offence.

You will also be punished for providing a vehicle or alcohol to a person who is likely to drive while intoxicated, as well as for taking a ride in a vehicle driven by a person who is under the influence of alcohol.

Never engage in dangerous, aggressive driving behavior.

"Road rage," such as sudden braking in order to obstruct the passage of other vehicles, failure to maintain a safe distance, and sudden changes in driving lane, is punishable as obstructive driving. Road rage and aggressive driving behavior are extremely dangerous acts that can lead to accidents by disrupting the normal operation of other drivers. Never drive in such ways.

To senior drivers

It might be a good idea to switch to a Safety Support Car S with advanced safety features such as a collision damage mitigation braking system and a system that suppresses acceleration after pedal misapplication. The Tokyo Metropolitan Government is subsidizing purchase and installation of a system that suppresses acceleration after pedal misapplication.

Take safety actions such as avoiding driving when you don't feel well.

Consider voluntarily surrendering your driver's license if you have lost confidence in your driving ability or if your family has started to worry about your driving.



[Details on the subsidies](#)

Point 3 Preventing Bicycle Accidents

Keeping others aware of your presence by turning on your bicycle light or wearing reflective goods will help prevent traffic accidents at dusk and night.

All cyclists, both adults and children, should wear helmets.

Many of the traffic accidents involving seniors who were riding bicycles occurred at intersections.

Prevent traffic accidents by riding a bicycle safely.

The Tokyo Metropolitan Government ordinance has made it mandatory from April 1, 2020, for all those who use bicycles to be insured.* Take out insurance to cover yourself in case of a bicycle accident.

*Accident insurance for liability coverage in the event of death or bodily injury to a third party caused when using a bicycle.



Point 4 Preventing Motorcycle Accidents

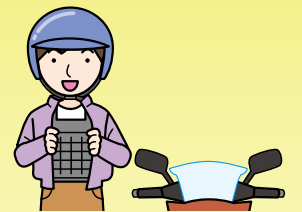
Single-vehicle motorcycle accidents are increasing.

Whenever you go through an intersection, make sure it is safe.

Slow down sufficiently before taking a curve.

Never pass between cars or force yourself to overtake others, as it is very dangerous.

Fasten the chin strap of your helmet firmly, and wear chest and stomach protectors.



Point 5 Promoting Measures against Illegal Parking

Just one vehicle parked illegally can cause a traffic jam or accident. Particularly, illegal parking in or near an intersection is a dangerous act that could lead to a major accident. Never park illegally.

Traffic volume tends to increase near the end of the year. When you go out by car, look into parking space at the destination in advance. All drivers should take care not to park illegally by using a parking lot or a space with a parking meter, even when parking for a very short time.



Traffic Safety Section
Office for Promotion of Citizen Safety
Tokyo Metropolitan Government

<https://www.tomin-azen.metro.tokyo.lg.jp/english/traffic-safety/>

Issued October 2020 Registration number: (2) 17
2020 Tokyo Traffic Safety Campaign Leaflet

Edited and issued by: Traffic Safety Section
Safety Promotion Division
Office for Promotion of Citizen Safety
Tokyo Metropolitan Government
2-8-1 Nishi-shinjuku, Shinjuku-ku, Tokyo
Phone: 03-5388-3125



この印刷物は、印刷用の紙へリサイクルできます。