


# 2021 Nationwide Spring Traffic Safety Campaign

Tuesday, April 6th to Thursday, April 15th  
Making Tokyo the world's No. 1 city in terms of traffic safety



The 8th Tokyo Metropolitan Government Traffic Safety Poster Contest (FY2020) Governor's Prize-winning entry by Kaminishizono Saki, 3rd Grade at Kamishinmei Elementary School of Shinagawa-ku

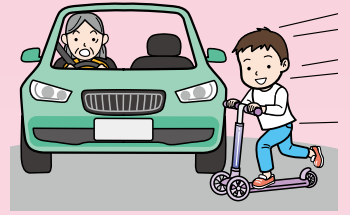
 Tokyo Metropolitan Government Council on Measures for Traffic in the Capital

# Tokyo Metropolitan Government's Key Points in the 2021 Nationwide Spring Traffic Safety Campaign

## Point 1 Ensuring Safety of Pedestrians, Centering on Children and Seniors

### To parents and guardians of children

There are many traffic accidents involving children in Tokyo. In some cases, serious traffic accidents have occurred while using kick skaters and other play equipment on the road, so do not allow these equipment to be used on the road. Adults should be the role model to show children how to follow traffic rules and manners.



### To seniors

Seniors account for about half of all pedestrian fatalities.

Even when walking on familiar streets, follow the traffic rules and always make sure that you are safe. And set an examples for others by adopting safe behavior.

### To all pedestrians

Practice the safe behavior to protect your own lives such as look right, left and right again, and confirm safety of the road before crossing, even if the traffic light is showing green.

There have been tragic accidents where people have fallen asleep on the road after drinking alcohol and have been hit by cars. If you drink alcohol, stay steady until you get home safely.

## Point 2 Promoting Safe Use of Bicycles

Keeping others aware of your presence by turning on your bicycle light or wearing reflective goods will help prevent traffic accidents at dusk and night.

All cyclists, both adults and children, should wear helmets.

Many of the traffic accidents involving seniors who were riding bicycles occurred at intersections. Make sure to stop and check your safety at intersections to prevent traffic accidents.

The Tokyo Metropolitan Government has made it mandatory for all those who use bicycles to be insured.\*Take out insurance to cover yourself in case of a bicycle accident.

\*Accident insurance for liability coverage in the event of death or bodily injury to a third party caused when using a bicycle.



## Point 3 Raising Awareness of Safe Driving, Centering on Protection of Pedestrians

### To all drivers

**Drunk driving is a criminal offence.**

You will also be punished for providing a vehicle or alcohol to a person who is likely to drive while intoxicated, as well as for taking a ride in a vehicle driven by a person who is under the influence of alcohol.

**Never engage in dangerous, aggressive driving behavior**

“Road rage,” such as sudden braking in order to obstruct the passage of other vehicles, failure to maintain a safe distance, and sudden changes in driving lane, is punishable as obstructive driving. Road rage and aggressive driving behavior are extremely dangerous acts that can lead to accidents by disrupting the normal operation of other drivers. Never drive in such ways.

### To senior drivers

It might be a good idea to switch to a Safety Support Car S with advanced safety features such as a collision damage mitigation braking system and a system that suppresses acceleration after pedal misapplication.

Take safety actions such as avoiding driving when you don't feel well.

Consider voluntarily surrendering your driver's license if you have lost confidence in your driving ability or if your family has started to worry about your driving.

## Point 4 Preventing Motorcycle Accidents

Single-vehicle motorcycle accidents are increasing.

Whenever you go through an intersection, make sure it is safe.

Slow down sufficiently before taking a curve.

Never pass between cars or force yourself to overtake others, as it is very dangerous.

Fasten the chin strap of your helmet firmly, and wear chest and stomach protectors.



Designated Driver

### \*Designated Driver System

This system aims to prevent drunk driving by choosing a person to stay sober when a group of people go out to drink by car. The designated driver drives the other members home so nobody drives under the influence of alcohol.

**Traffic Safety Section  
Office for Promotion of Citizen Safety  
Tokyo Metropolitan Government**

<https://www.tomin-anzen.metro.tokyo.lg.jp/english/traffic-safety/>

Issued April 2021 Registration number: (2) 38  
2021 Nationwide Spring Traffic Safety Campaign Leaflet

Edited and  
issued by:

Traffic Safety Section  
Safety Promotion Division  
Office for Promotion of Citizen Safety  
Tokyo Metropolitan Government  
2-8-1 Nishi-shinjuku, Shinjuku-ku, Tokyo  
Phone: 03-5388-3125

石油系溶剤を含まないインキを  
使用しています。



リサイクル適性 (A)  
この印刷物は、印刷用の紙へ  
リサイクルできます。